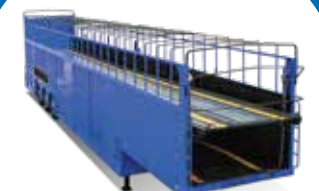




THACO SPECIAL VEHICLES

MANUFACTURING LTD., Co



(+84) 938 901 169



thacosv@thaco.com.vn



facebook.com/thaco.industries

THACO CHU LAI IZ, NUI THANH DIST., QUANG NAM PROVINCE, VIETNAM

Website
<https://thacosv.vn>

CONTENTS

OVERVIEW

PRODUCTS

TECHNOLOGY

Design & Simulation

Fabrication

Welding Activities

Painting Activities

Assembly Activities

Inspection

Packing

QUALITY MANAGEMENT SYSTEM

EXPORT MARKET

THACO SPECIAL VEHICLES MANUFACTURING

OVERVIEW



Founded

2016



Area

10 ha



Capital

USD 25 million



Capacity

30,000 units/year



Workforce

700 people



Products

Semi-trailers
Trailers and special vehicles

Thaco Special Vehicles Manufacturing Limited Company was established on February 2016, specializes in manufacturing semi-trailers and specialized equipment as per customers' requirements.

The company is invested in a modern technology system and operates according to strict production processes such as slitting line, Fiber laser cutting machine, CNC pressing machine, automatic welding equipment, semi-trailer chain turning equipment, paint line (ED, powder coating, shot blasting, ...). Products always meet the standards of the quality management system (ISO 9001: 2015) and environment (ISO 14001: 2015).

Recently, the factory has produced and supplied for the domestic and some export markets such as: USA, Korea, Japan, Thailand, Cambodia, Myanmar. To increase the export to the US and other markets like Japan, Canada, and Australia, the firm upgrades the capacity of a semi-trailer and heavy component factory to 30,000 units per year.

PRODUCTS

ASEAN MARKET



20' Skeleton,
2 axles, 04 twist locks



40' Skeleton,
3 axles, 08 twist locks



45' Gooseneck
3 axles, 06 twist locks



40' Flatbed
3 axles, 08 twist locks



Heavy dump, 17m³



40' Skeleton,
2 axles, 08 twist locks



45' Skeleton,
3 axles, 12 twist locks



48' Gooseneck
3 axles, 6 twist locks



45' Flatbed
3 axles, 10 twist locks



Car - carrier semi trailer

HIGH STANDARD MARKET



20' Slider, 2 axles



40' / 45' Extendable, 2 axles



20' / 40', Combo, 2 axles



20' / 40' City Combo, 2 axles



Low bed



40' Gooseneck, 2 axles



53', Gooseneck, 2 axles



33' Slider, 3 axles



20' / 40' Combo, 3 axles



40' Gooseneck Light Weight



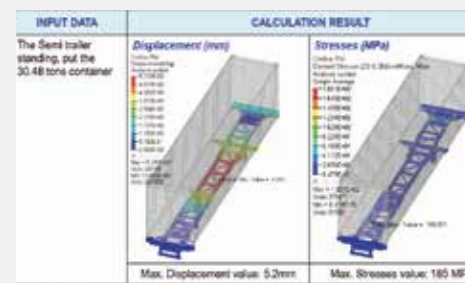
TOTAL AREA 16,100M²
INCLUDING 4 MAIN
PRODUCTION LINES

01 WELDING LINE

02 PAINTING LINE

03 ASSEMBLY LINE

04 INSPECTION LINE



1 Design, simulation



2 Input material



3 Fabrication



4 Welding



8 Packing



7 Inspection



6 Assembly

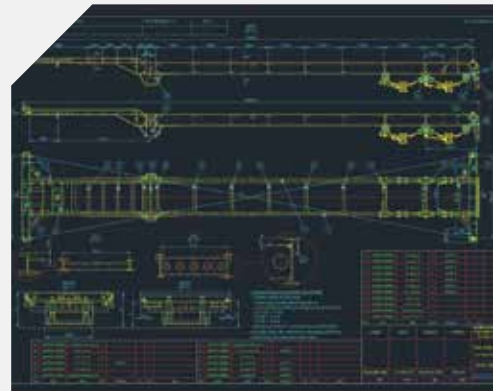


5 ED, painting, shot blasting

DESIGN & SIMULATION

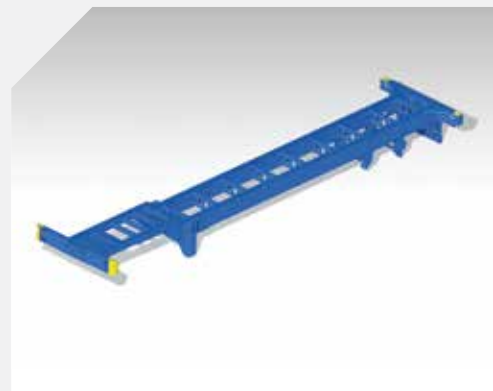


- DESIGN PROCEDURE
- DESIGN CONTROL DRAWING
- 2D, 3D SIMULATION



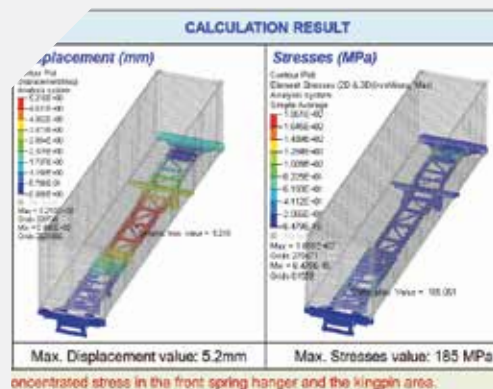
2D DESIGNING AUTOCAD SOFTWARE

Description, overview and detail calculation of products.
Dimension and tolerance display.



3D DESIGNING CATIA SOFTWARE

The optimization for durability calculation and accuracy increasing.
Assembly processing display.



SIMULATION, CALCULATION: HYPERWORKS

Simulation, analyzing, data management
Product structural strength calculation.
Design and production processing optimization.



Testing machine
(material properties testing)



Surface roughness
testing machine

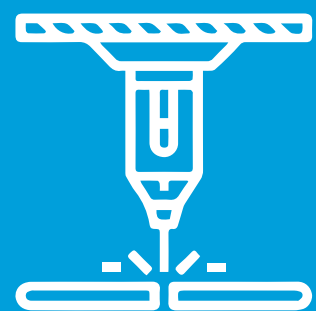


Ultrasonic welding
testing machine



Spectrograph machine
(material composition testing)

FABRICATION



- WORKPIECE CUTTING:
CNC laser cutting machine,
CNC Plasma, CNC Oxy Gas
- PREVENTING VARIATION OF
WELDING CONNECTING POINTS:
Hydraulic Press Machine, Lathe,
Milling,...



CNC PRESSING MACHINE

Thickness material: 0.6 - 12 mm
Max-Length: 12,000 mm



SLITTING LINE

Thickness: 0.3 - 6 mm
Width material: 50 - 1,200 mm



SQUARE STEEL, TUBE STEEL
LASER CUTTING MACHINE

Cutting size: □ 15 - 155 mm; Ø20 - 220 mm
Thickness: 8 mm (steel); 4mm (stainless steel)



FIBER LASER CUTTING MACHINE

Thickness: 25 mm
Cutting size: 12,300 - 2,000 mm



CNC GAS & PLASMA CUTTING MACHINE

Thickness: 150 mm
Cutting size: 3,200 x 15,000 mm

WELDING ACTIVITIES



► CAPACITY:
55 chassis/day
Dump box, semi-trailer welding



AUTOMATIC WELDING EQUIPMENT

Manufacturer: Miller (American)
Working length: 40,000 mm



SEMI TRAILER
CHAIN TURNING EQUIPMENT

Max load: 10 tons
Dimension (LxWxH): 6,000 x 4,100 x 5,000 mm



1 BD & WD cross beam



2 Small parts welding



4 Underside welding



3 Welding to connect chassis frame

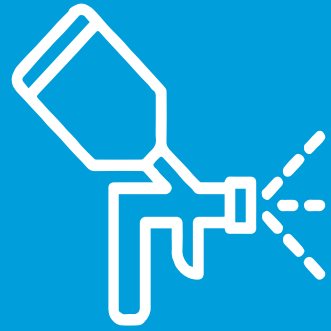


5 Side welding



6 Upside turning

PAINTING ACTIVITIES



► CAPACITY:
55 chassis/day



SHOT BLASTING BOOTH

Max material: 18,000 x 1,500 x 2,500 mm
Load: 10,000 kg



POWDER COATING LINE

Max material: 18,000 x 1,500 x 2,500 mm
Load: 140 kg



ED COATING LINE

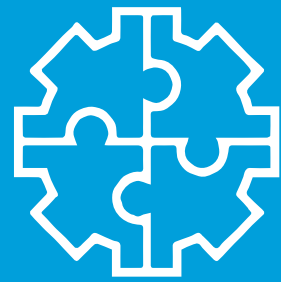
Max material: 18,000 x 1,400 x 2,500 mm
Salt mist resistance: 1,000 hours
Capacity: 33,000 set/years



TOPCOATING LINE

Max material: 18,000 x 5,080 x 5,000 mm
Paint pressurer: P = 5.5 kg/cm²

ASSEMBLY ACTIVITIES



► CAPACITY:
55 chassis/day
Dump box, semi-trailer welding



1 Air system ass'y



2 Electric system ass'y



3 Connect front & rear frame



4 Suspension & axle ass'y



7 Tire assembling

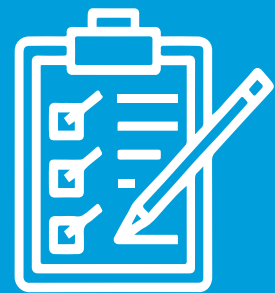


6 Air and electric system connection



5 Axle adjusting & assembling

INSPECTION



1 Checking braking system



2 Under pit inspection



4 Road test



3 Weight

PACKING



1 Stacking into bundle



2 Fastening



4 Handover



3 Inspection

QUALITY CERTIFICATION



Quality management system
(ISO 9001:2015)



Environment management system
(ISO 14001:2015)

QUALIFIED SUPPLIERS



Type approval certificate for trailers and semi-trailers



EXPORT MARKET



JMK CORPORATION

Exported the first batch of 870 semi-trailers to the US on December 15.

